



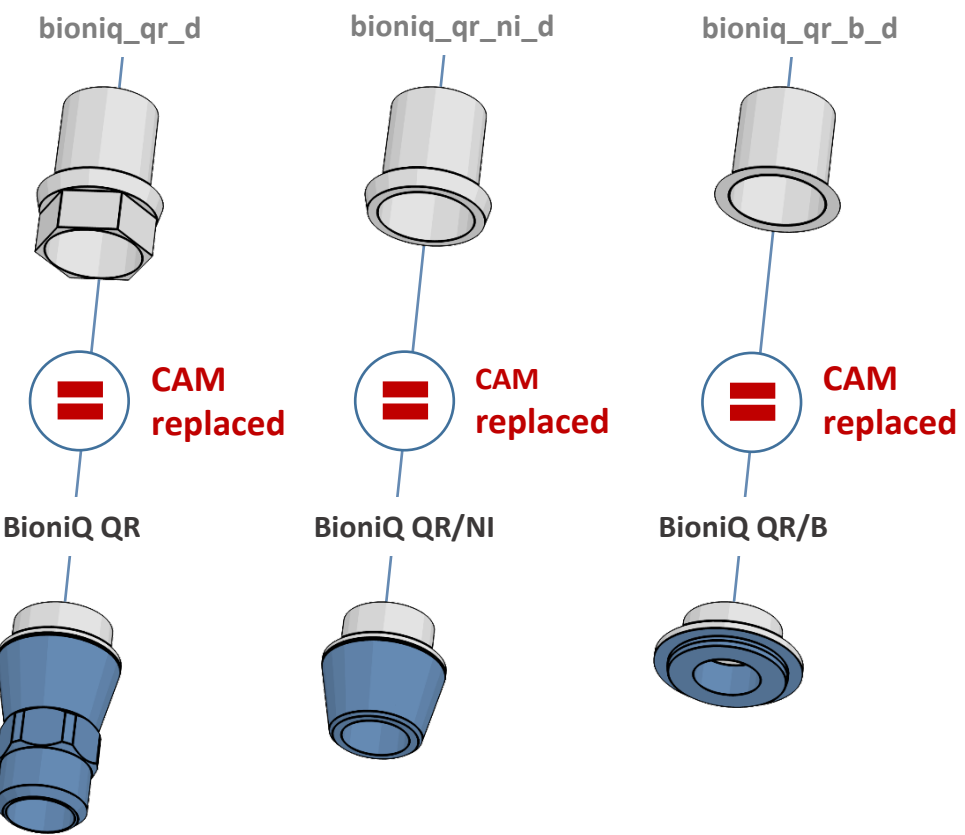
exocad

LASAK BioniQ QR Exocad library structure

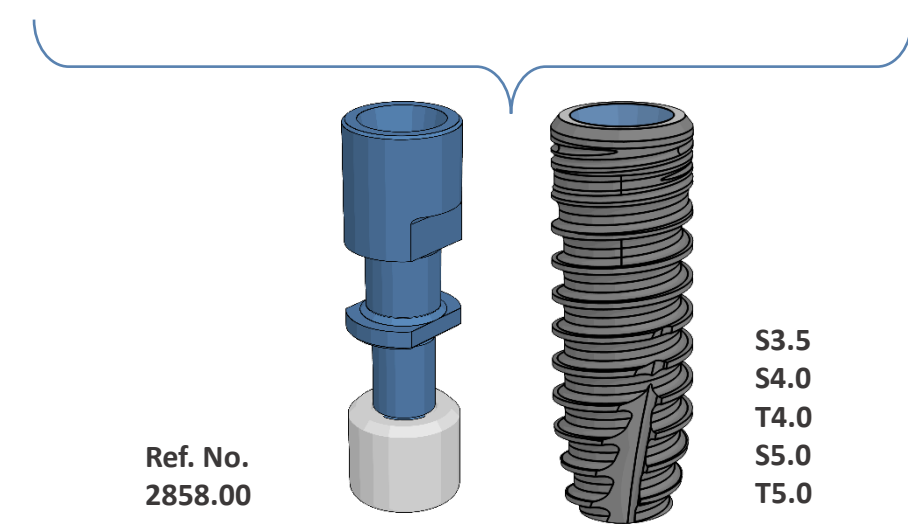


Scanbody QR, indexed – narrow
Ref. No. 2876.00

Dummy base shown
in the Exocad library



The real base of the
BioniQ component





exocad

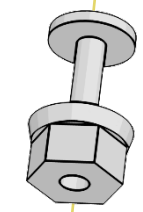
LASAK BioniQ QN Exocad library structure

Scanbody QN, indexed – narrow
Ref. No. 2877.00



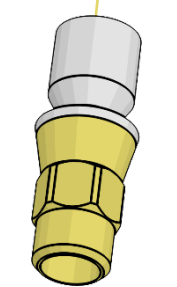
Dummy base shown
in the Exocad library

bioniq_qn_d

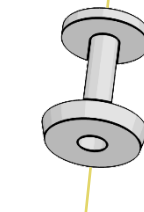


CAM replaced

BioniQ QN



bioniq_qn_ni_d

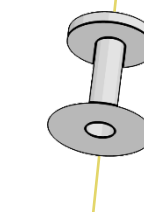


CAM replaced

BioniQ QN/NI

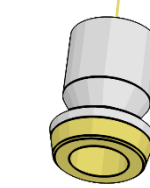


bioniq_qn_b_d



CAM replaced

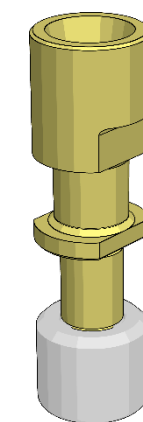
BioniQ QN/B



The real base of the
BioniQ component



Ref. No.
2859.00



S2.9

