



exocad

### LASAK BioniQ QR Exocad library structure

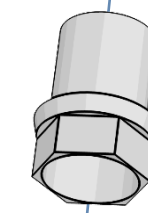
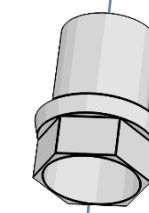


Scanbody QR, indexed – long  
Ref. No. 2815.00

bioniq\_qr\_premill\_ag

bioniq\_qr\_premill\_nt

Dummy base shown  
in the Exocad library



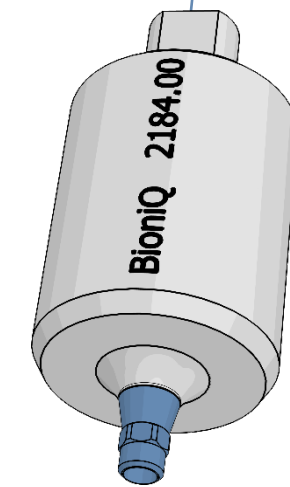
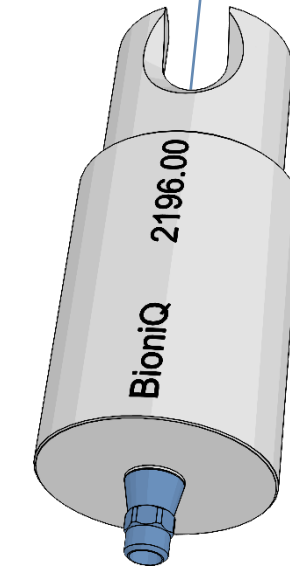
CAM  
replaced

CAM  
replaced

BioniQ QR Premill abutment AG

BioniQ QR Premill abutment NT

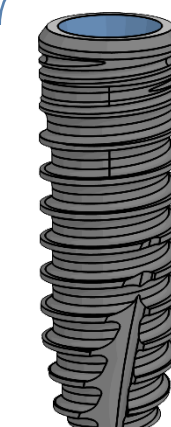
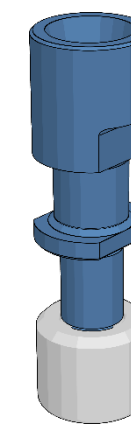
The real base of the  
BioniQ component



Ref. No.  
2196.00

Ref. No.  
2184.00

Ref. No.  
2858.00



S3.5  
S4.0  
T4.0  
S5.0  
T5.0



exocad

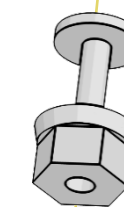
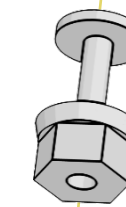
### LASAK BioniQ QN Exocad library structure

Scanbody QN, indexed – long  
Ref. No. 2840.00



bioniq\_qn\_premill\_ag

bioniq\_qn\_premill\_nt



Dummy base shown  
in the Exocad library



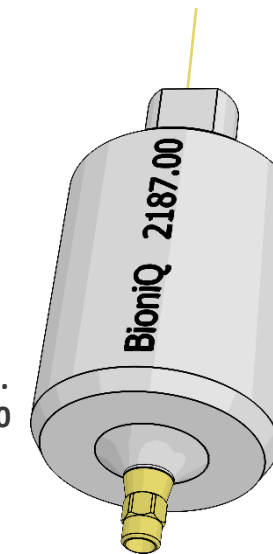
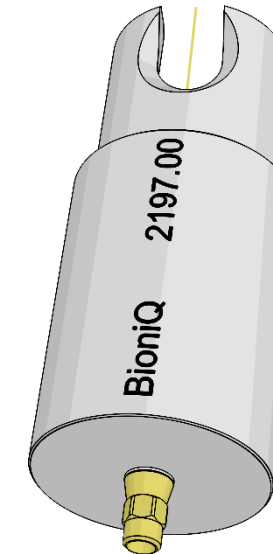
CAM  
replaced



CAM  
replaced

BioniQ QN Premill abutment AG

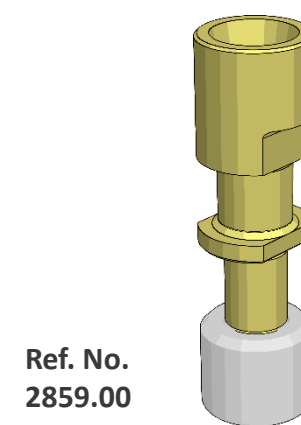
BioniQ QN Premill abutment NT



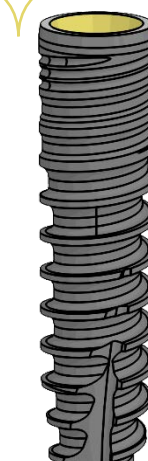
Ref. No.  
2187.00

Ref. No.  
2187.00

The real base of the  
BioniQ component



Ref. No.  
2859.00



S2.9